

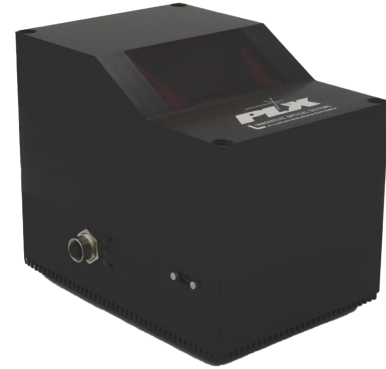
Orthogonal Laser Metrology Module (O-LAMM)

PLX's O-LAMM integrates core Monolithic Optical Structure Technology™ (M.O.S.T) and precision Beam Steering Technology, creating a compact and robust 3D laser-scanning system for in situ metrology. O-LAMM's line-scanning system can track multiple targets at high speeds up to 100 Hz, using retro-reflective cooperative markers on robotic end-effectors or other moving devices.



**Dovetail
Mounts**

**Industrial POE+
Connection**



Specification

Range	15 m
Field of view	50° x 60°
Accuracy	<5 arc sec
Frame rate	100 fps with 20 targets
EMC Class	Class A
Laser safety level	Class 1
Power Consumption	10 W
Temperature range	10-40°C



Custom configurations for specialized applications

O-LAMM is a high-precision optical metrology system designed for high-accuracy alignment and stability, ensuring reliable performance across aerospace, defense, and industrial metrology applications. PLX can tailor O-LAMM to specific customer needs, including mounting configurations and environmental resilience, providing a versatile solution for precision measurement and alignment needs.

Important Notice

This datasheet contains typical information specific to products manufactured at the time of its publication. All rights reserved. All material herein is the property of PLX Inc. and shall not be reproduced without the written permission of PLX Inc.