

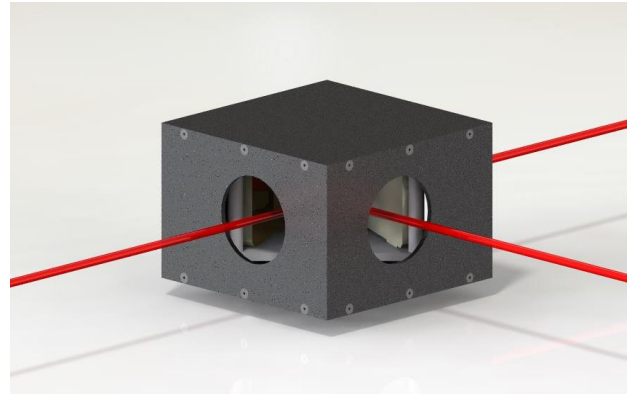
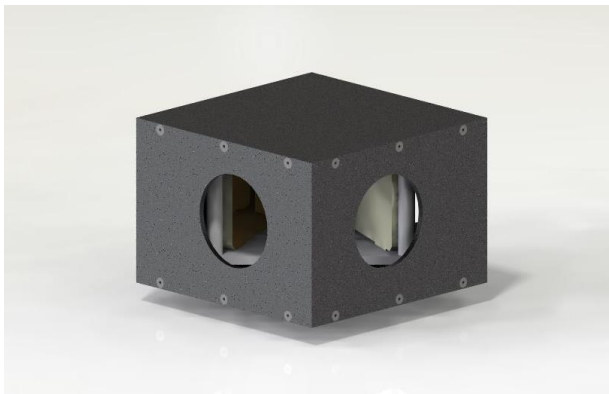
## PLX Hollow Beamsplitting Pentamirror™ (HBPM)

The performance of a pentamirror with better accuracy and wavelength transmission.

The Hollow Beamsplitting Pentamirror extends the range of a pentamirror through multiple outputs that are 90 degrees from one another. As a hollow optical assembly, there are no wavelength limitations as there are with solid pentaprisms. The HBPM features accuracies to better than 1 arcsecond.

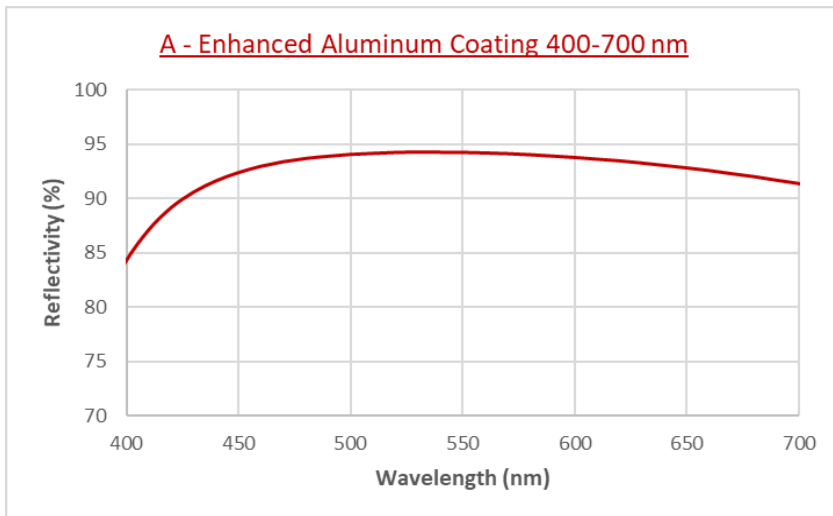
Applications:

Surveying or aligning two lines of sight at right angles to each other, simplifying or speeding up operation or set-up.



Standard configuration includes one beamsplitter. Optional configuration with two beamsplitters is available.

### Coating Curve



### Specifications

|                  |  |
|------------------|--|
| Optical Material | Fused Silica                               |
| Housing Material | Aluminum                                   |
| Coating          | Visible beamsplitter<br>Protected Aluminum |
| Wavelength       | 400-700nm                                  |

### Specification Chart

| Model   | Clear Aperture (in/mm) | Beam Deviation (arcsec.) | Exiting Wavefront (P.V. 633nm) | Weight (grams) |
|---------|------------------------|--------------------------|--------------------------------|----------------|
| HBPM-10 | 1.0/25                 | 1.0 – 30.0               | 0.1 – 0.5                      | 685            |
| HBPM-20 | 2.0/51                 | 1.0 – 30.0               | 0.1 – 0.5                      | 1650           |

### Important Notice

This datasheet contains typical information specific to products manufactured at the time of its publication. All rights reserved. All material herein is the property of PLX Inc. and shall not be reproduced without the written permission of PLX Inc.